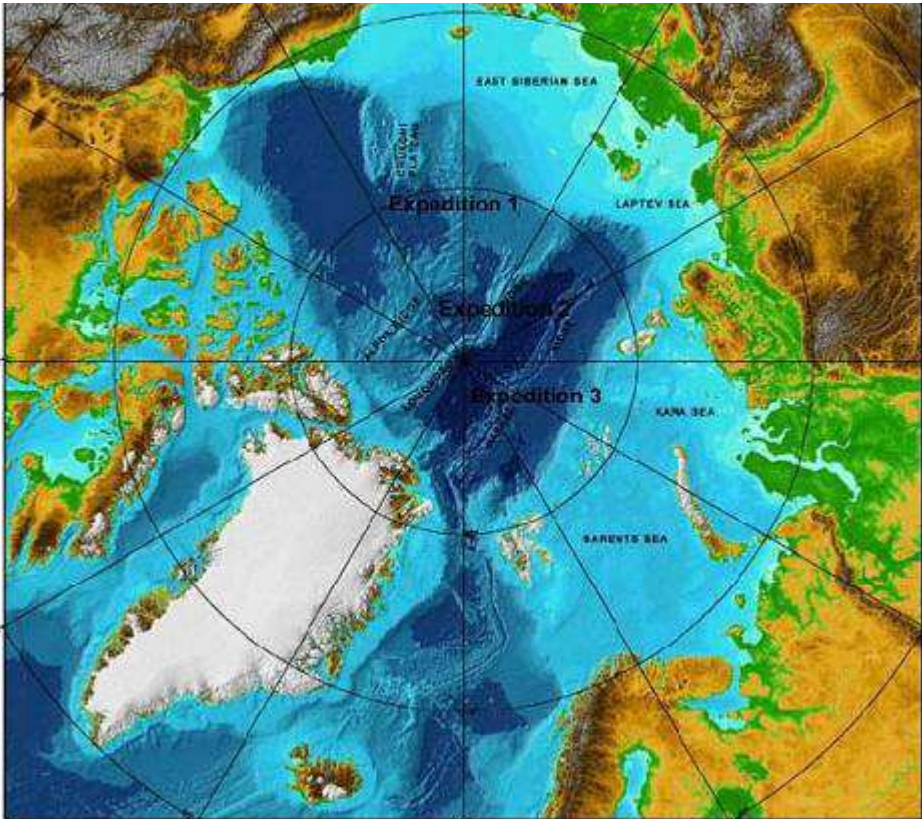
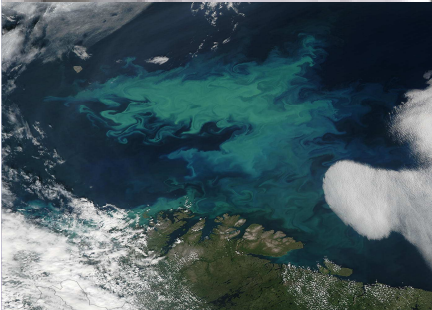
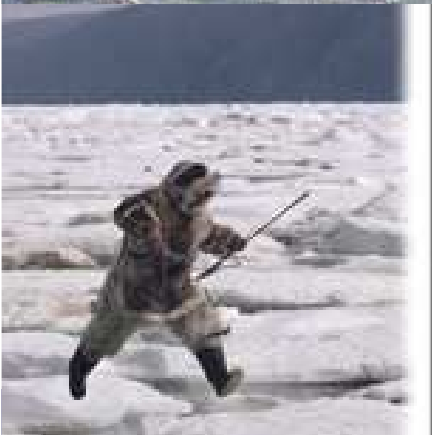


# Challenges in the Arctic Frederic Hauge President Bellona Foundation



# Arctic

-A vulnerable environment

Cold and clean ocean

Hugh production of fish and biomass

An ecosystem in rapid change

- Important fishing ground for EU, Norway, Russia, US and Canada

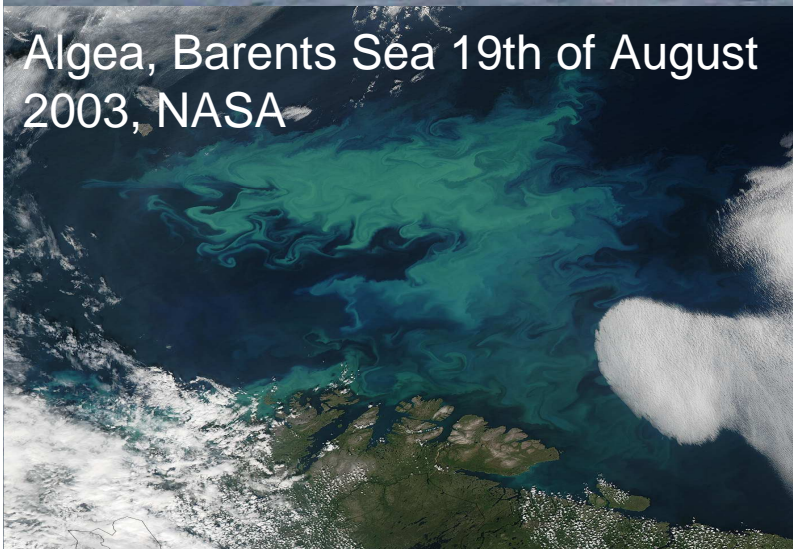
Expected to contain 25 % of the worlds unexplored oil



# Rich and clean Arctic?



Algae, Barents Sea 19th of August 2003, NASA



# Are we prepared?



**Could Deepwater Horizon happen  
in Arctic?**

# Enviro-challenges with oil drilling in the North

- Air releases
- Regular discharges into sea with operation malfunctions and consequences for the environment
- Consequences of onshore production and re-injection of oil sludge, etc
- Possibility of re-injection
- Modelling oil spill
- Consequences of oil spills for sea mammals and coastline, etc.
- Consequences of increased oil level in water (fish eggs, plankton, algae)
- Possibility of large oil discharges
- Polar nights
- Icing
- Social consequences
- Economical analyses
- Enviro-technology
- Decommissioning and operational irregularities
- Waste analyses
- Consequences of the ship traffic
- Oil spill effects on tourist businesses
- Ballast water
- Seismic activity mapping
- Consequences for seismic activity
- Consequences for the Saami people's interests
- Consequences for fisheries
- Consequences for sea exploitation



# Could this happen here?

- ❑ Even the supposedly best-regulated part of European offshore industry suffers major incidents.
- ❑ Risks of EU offshore activities are increasing



# EU proposal on offshore safety

- ❑ A regulation (not a directive)
- ❑ A strong competent authority for safety and environment
- ❑ Independent third party verification
- ❑ Compulsory risk assessments for each project
- ❑ Major Hazards Reports to be assessed and accepted by competent authorities
- ❑ Delegated powers to the Commission to adapt specific requirements



# What should be improved

- **Financial security**
- **Human resources**
- **List of certifiers for independent third party verification**
- **Criminal liability**
- **Extra-territoriality**
- **An EU Agency**
- **Arctic and other harsh conditions**



# EU Tool box for the Arctic:

- Arctic – part of EU 2050 Road Map
- Regulation on offshore safety
- Phase out heavy fuel oil (bunker and carriage)
- Reduction measures for Black Carbon
- State aid to shipping companies in return for lower emissions and higher safety





# THE NGO PERSPECTIVE ON OFFSHORE SAFETY

Stakeholder meeting  
Brussels, 31 January 2012

**Frederic Hauge**  
**President**

# Arctic and other harsh conditions

Half of the existing offshore industry standards are not relevant or adapted to the Barents Sea



[www.eoearth.org](http://www.eoearth.org)



# Human resources

Employees are under increasing pressure



1320024 [RF] © www.visualphotos.com



# Financial security

All operators must provide substantial financial security



[www.climatearc.org](http://www.climatearc.org)



**BELLONA**

# List of certifiers for independent third party verification

Common EU list needed also for production installation verifiers



[www.msnbc.msn.com](http://www.msnbc.msn.com)



# Criminal liability

Major oil spills must qualify under 2008 directive



[www.sonomacountygazette.blogspot.com](http://www.sonomacountygazette.blogspot.com)



# Extra-territoriality

Obligations on operators must apply beyond Europe, e.g.

- Transparency
- Whistle-blowing
- Independent verification



[www.blog.foreignpolicy.com](http://www.blog.foreignpolicy.com)



# An EU Agency

Ensuring hands-on control of implementation, holding all the required expertise.

A back-up and assistance for competent authorities.



1320023 [RF] © www.visualphotos.com



# Security concerns in the Arctic

A photograph of an Arctic sea ice landscape. The foreground shows a dark, open expanse of water with several small, irregular ice floes scattered across it. The middle ground is dominated by a vast, flat expanse of white sea ice that stretches to the horizon. The sky is a deep, clear blue, with a few wispy white clouds near the horizon. The overall scene is serene and desolate, capturing the stark beauty of the high northern latitudes.

- Greenhouse effect
- A fragile ecosystem with dramatic changes
- Global distillation
- Transport by Gulf Stream
- Transport by rivers
- Increasing oil production and transport
- Nuclear challenges
- Hunting for marine resources